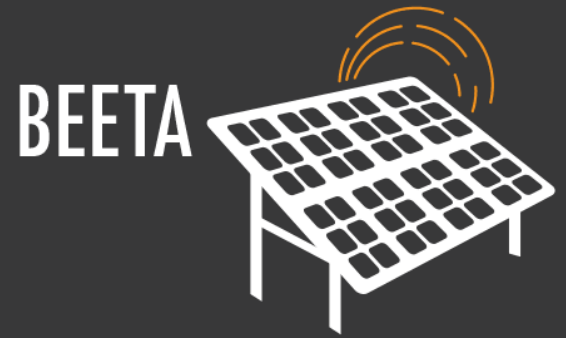
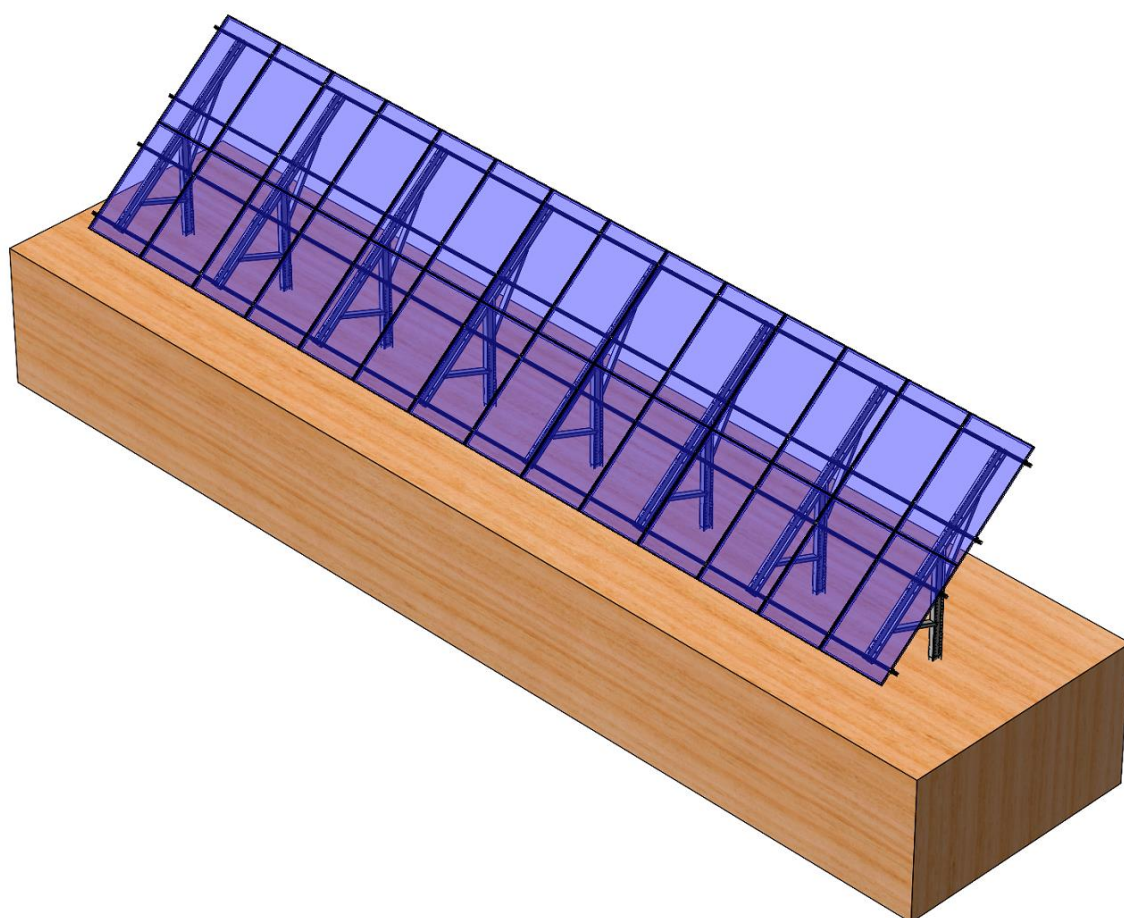


BEETA



THE BEST SOLUTION FOR SOLAR POWER PLANTS FOR GROUND INSTALLATIONS

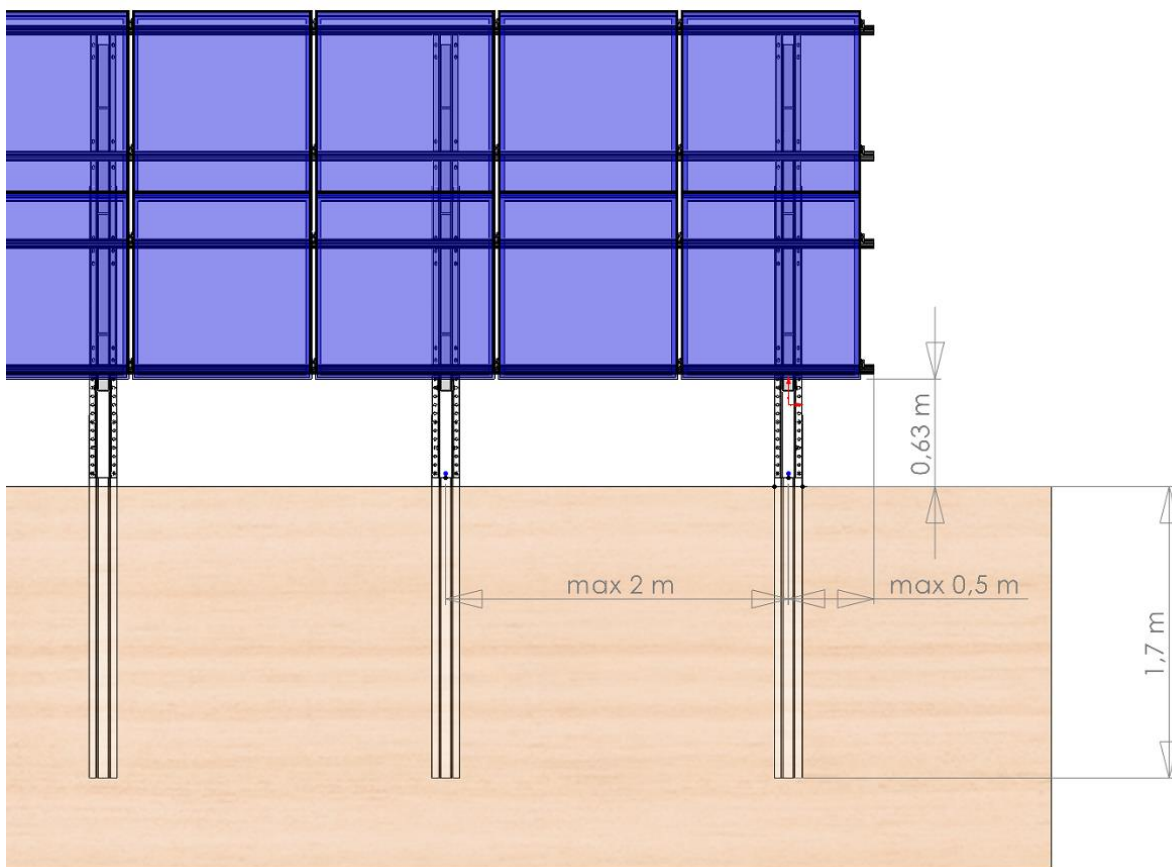




Beta Double Easy Rail leg options; jointed foot 38550, concrete foot 38560

Beta Double Easy Rail mounting brackets:

- Installation angle 40 °
- Maximum leg distance 2 m
- The maximum overhang of the Easy Rail profile from the outermost leg is 0.5 m
- Modular construction, suitable for panels of different sizes
- Recommendation for the maximum length of a row of panels about 20 solar panels (due to thermal expansion)



Positioning and dimensioning of the legs

Foot to be stitched:

- Reaming depth recommended. At least 1.5 m.
- Threshing at a minimum of 0.5 m below the local frost line.
- The ground clearance depends on the dimensions of the panel. For example, the depth of the trench is 1.7 m, the height of the panel is 1.65 m

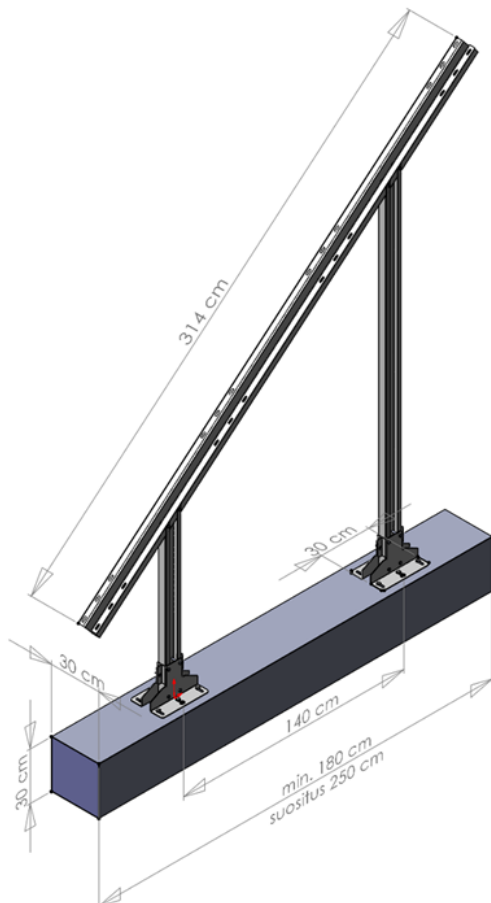
NOTE!

As a foundation method, driving into the ground requires soil in which it is possible to sink the posts. Recommended dredging depth depends on the soil and the geographical location of the installation site. It may be necessary to carry out a soil survey or test piling.

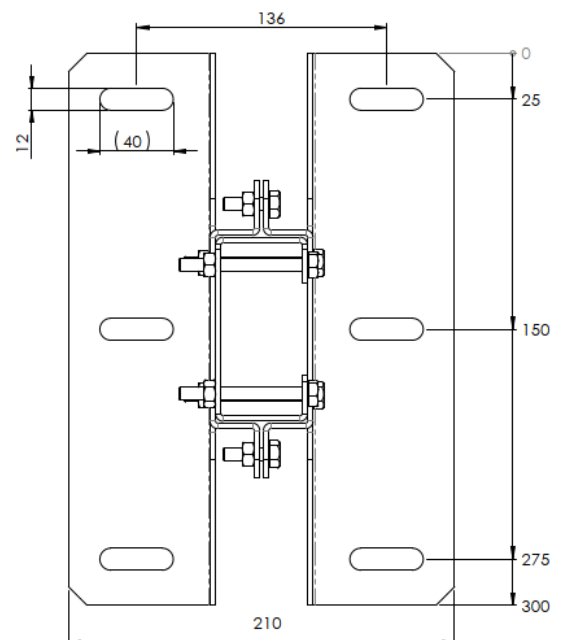
Concrete footing:

- The foot is attached to the concrete with e.g. 6+6 concrete screws (8x60) or wedge anchors. They are not included in the delivery.
- Length of concrete counterweight min 180 cm. Recommendation 250 cm. Diameter, for example, 30x30 cm. The mass of the concrete weight can vary depending on the wind and installation conditions.
- The foot can also be set up, for example, on top of a rock (fixing accessories and fixing method are selected project-specific).

Pay special attention to the fact that the concrete foundations are horizontal and at the same height in relation to each other.



Dimensions of the concrete foot mounting flange (mm)



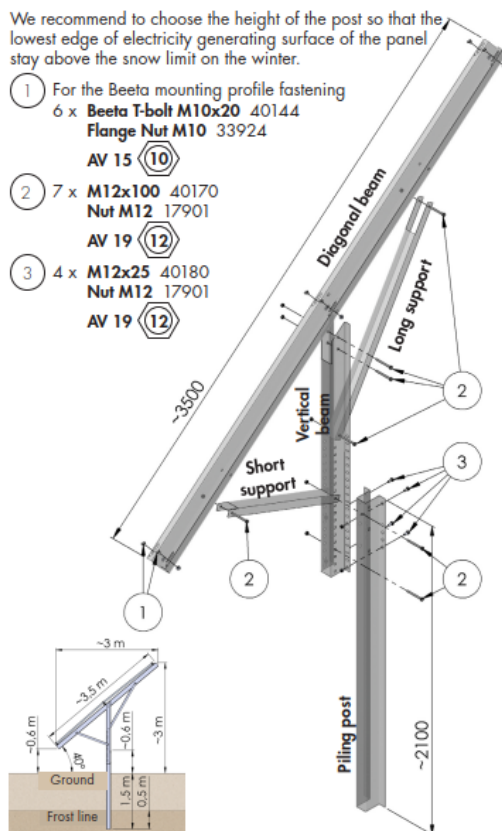
Beta Double Easy Rail concrete-based leg 38560 dimensioning and leg mounting flange dimension

BEETA DOUBLE PILING POST 38060

Incl. bolts and nuts for the assembling of the post and for the mounting profile.

We recommend to choose the height of the post so that the lowest edge of electricity generating surface of the panel stay above the snow limit on the winter.

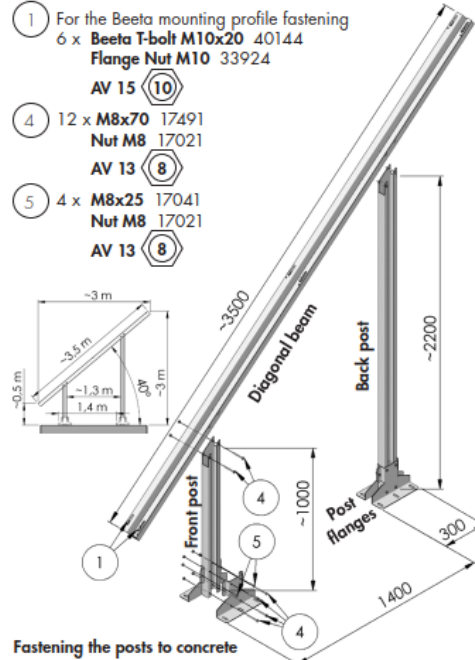
- 1 For the Beeta mounting profile fastening
 6 x **Beeta T-bolt M10x20** 40144
Flange Nut M10 33924
AV 15 (10)
- 2 7 x **M12x100** 40170
Nut M12 17901
AV 19 (12)
- 3 4 x **M12x25** 40180
Nut M12 17901
AV 19 (12)



BEETA DOUBLE CONCRETE POST 38290

Incl. bolts and nuts for the assembling of the post and for the mounting profile

- 1 For the Beeta mounting profile fastening
 6 x **Beeta T-bolt M10x20** 40144
Flange Nut M10 33924
AV 15 (10)
- 4 12 x **M8x70** 17491
Nut M8 17021
AV 13 (8)
- 5 4 x **M8x25** 17041
Nut M8 17021
AV 13 (8)



Fastening the posts to concrete

The front and back posts fasten to the concrete base with 6 screws (e.g. anchor bolts or 8x60 concrete screws) from the post flanges.

Pay attention during the installation!

- the concrete bases are horizontal and parallel
- the concrete bases have equal height

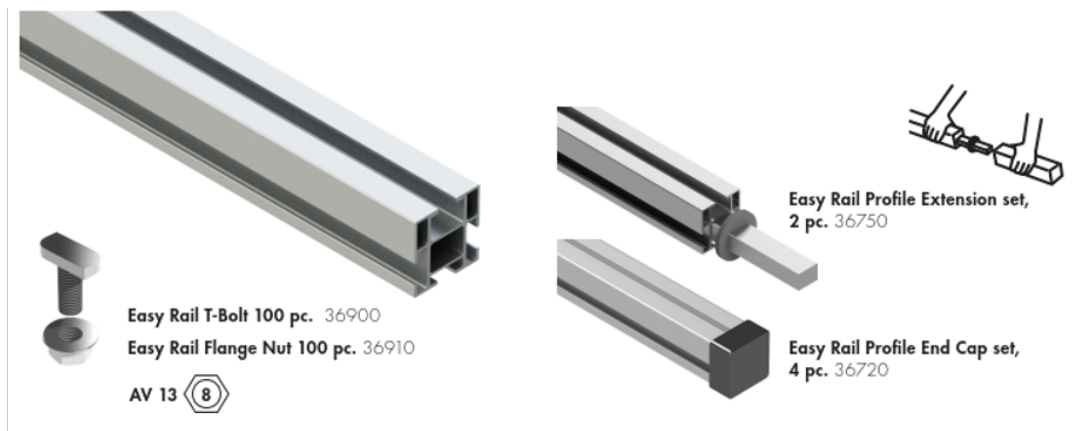
Beta double Easy Rail jointed leg and concrete leg assembly

The leg assemblies contain the bolts and nuts needed for assembly, as well as the rail screws and nuts used to attach the Easy Rail rails. Easy Rail rails are attached to the leg from the bottom of the rail. Fastening accessories; 2x rail screw M8x20 + Flange nut M8.

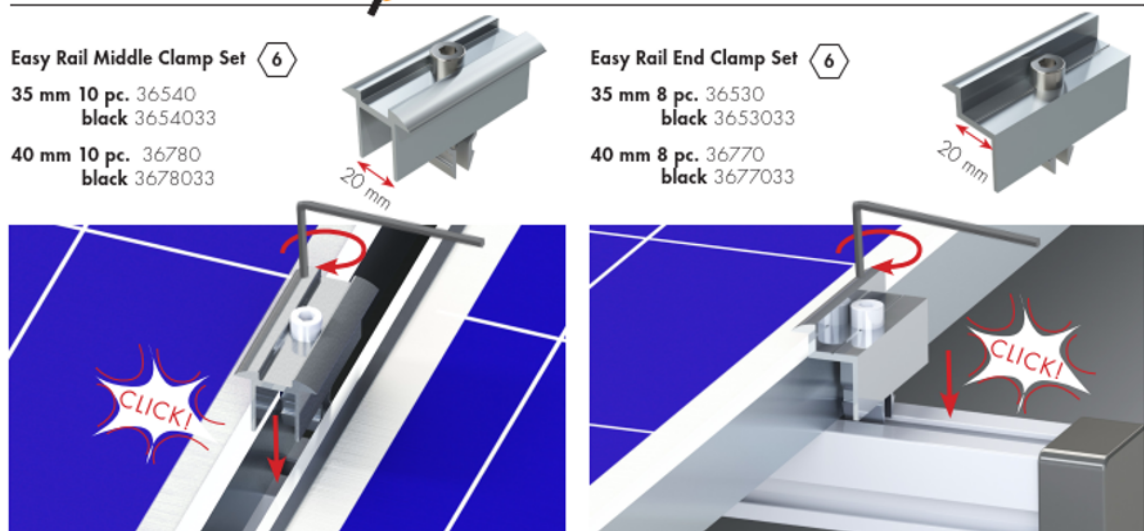


Easy Rail rail attachment to the leg

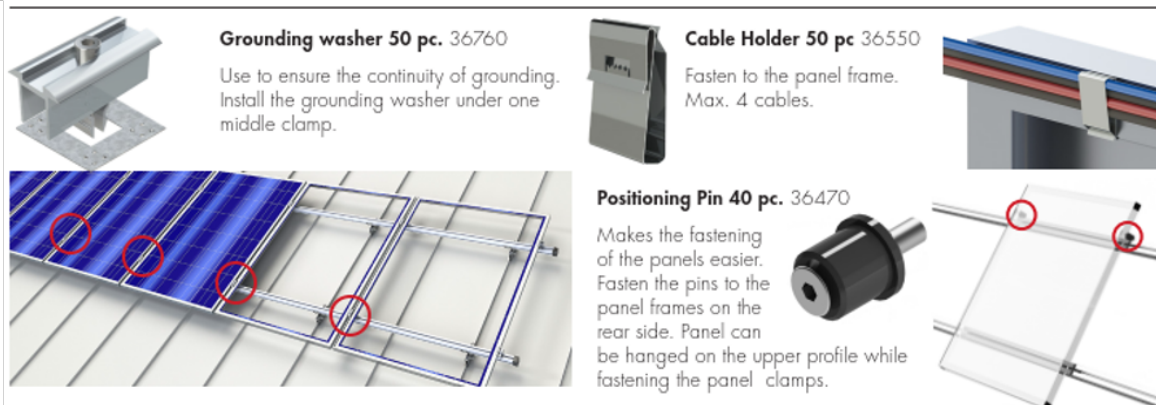
The panels are attached to Easy Rail profiles with Easy Rail panel fasteners. End brackets are installed at the ends of each profile line (4 pcs in total) and center brackets are installed in each panel gap.



PANEL FASTENING WITH **Easy Rail** CLAMPS



ACCESSORIES



Check the current installation instructions and product range related to Easy Rail products in the installation instructions for gable roofs (DELTA Easy Rail installation instructions)